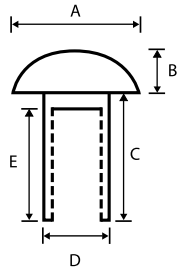


Button Head Barrel Nut - A2 Stainless Steel

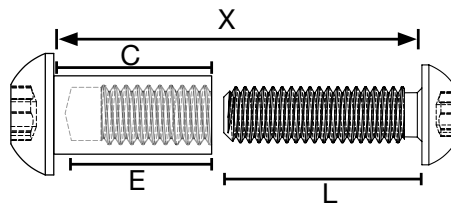


Dimensions (mm)

SIZE	M4	M5	M6	M6	M8	M8	M10	M12	LENGTH							DRIVER SIZE
	10mm	10mm	12mm	25mm	16mm	30mm	20mm	25mm	DIAMETER Thread Pitch	10mm	12mm	16mm	20mm	25mm	30mm	
A	9.2	10.2	11.8	11.8	14.6	14.6	18.5	21	M4 x 0.7	RTBBN 0410						T20
B	2.7	3.3	4.4	4.4	5	5	5.8	6.6	M5 x 0.8	RTBBN 0510						T25
C	10	10	12	25	16	30	20	25	M6 x 1.0		RTBBN 0612			RTBBN 0625		T30
D	5.2	6.2	7.9	7.9	9.9	9.9	12.5	16	M8 x 1.25			RTBBN 0816			RTBBN 0830	T40
E	6	6	9	20	12	25	14	20	M10 x 1.5				RTBBN 1020			T45
									M12 x 1.75					RTBBN 1225		T55

FORMULA FOR CLAMPING DISTANCES

Minimum Clamping Distance = X	$C - E + L = X$
Maximum Screw Length = L	$X - (C - E) - 1 = L$



Material and Finish

Material:	A2 Stainless Steel
Heat Treatment:	None
Finish:	Self Colour

A2
Stainless
Steel

Additional Information

Installation: Uses 6-Lobe Pin Tooling

See Video: [▶](#)

Removal: 2-Way Permanent Fixing



Every effort has been made to ensure the accuracy of information provided in this datasheet. Hafren Fasteners cannot warrant the information however, expressly or implied, and any liability arising from it is expressly excluded. Customers must satisfy themselves as to the suitability of products and the technical information relating to them, and it is recommended that you conduct your own tests to establish suitability. All sizes shown are in mm without min and max tolerances and are guide sizes. Hafren Fasteners reserve the right to change/alter sizes without notice. This does not effect your statutory rights.